



# **A Study of Institutional Data Governance at NDSU & BSU**

**Koji Fujiwara  
Shigeru Asano  
Koichi Yamamoto  
(Meiji University)**

*September 17-20, 2017*

# Outline of This Presentation

---

- Research Background
- About Our Universities
  - a. Yamagata University
  - b. Meiji University

## Acknowledgment

This study is supported by JSPS\* Grants-in-Aid for Scientific Research (KAKENHI) 17K04603 to Dr. Fujiwara.



---

\* Japan Society for the Promotion of Science

# Research Background



# Key Characteristic of H.E. in Japan

---

- The academic year begins in April and ends the following March.
- Students **must decide on their major** when they apply for **admission**.
  - **Can't change the major** after enrollment
  - No double or more majors
  - No pre- program (e.g., Pre-Med, Pre-Vet, etc.)
  - Almost **impossible** to
    - **Transfer** to another university
    - Have **flexible study plan**
- **High expectation to graduate in four years**

## (contd.)

---

- Regular Internal Job Transfer of Univ. Staff
  - Staff Only
  - i.e., HR → Accounting → IR → Facilities
- No Registrar or related position
  - Someone schedules classes **BUT**

**Who has responsibility for the university's student records?**

# Hot Topics in Japanese Higher Education

---

(in alphabetical order)

- Assessment
- Curriculum Mapping
- Enrollment Management
- **Institutional Research (IR)**
- Internal Quality Assurance
  - Institutional Effectiveness (IE)
- Internationalization
- Key Performance Indicators (KPI)
- Program Review
- World University Rankings

**We need accurate data!!**

# Problems Related to IR in Japan

---

1. No campus-wide integrated database
2. Too strict university's data access policies
  - a. Many Japanese IR offices are struggling with collecting the data from other offices within the same university.
3. No FERPA/HIPAA
  - a. The U.S. IR offices may be able to collect the data if there exists "**legitimate educational interest.**"

# What do we want to accomplish?

---

- We would like to learn the followings:
  1. Data Governance at your university
  2. The role of a registrar
  3. FERPA training program at your university
  4. Campus-wide Integrated Database
  5. How does your university manage semester course schedule and classroom assignment?
  6. The role of a provost: How a provost plays an important role in university management that leads to better teaching and research?
  7. Assessment & Curriculum Mapping
    - a. How to Establish a Culture of Assessment
    - b. Curriculum Mapping for Particular Programs



# Yamagata University

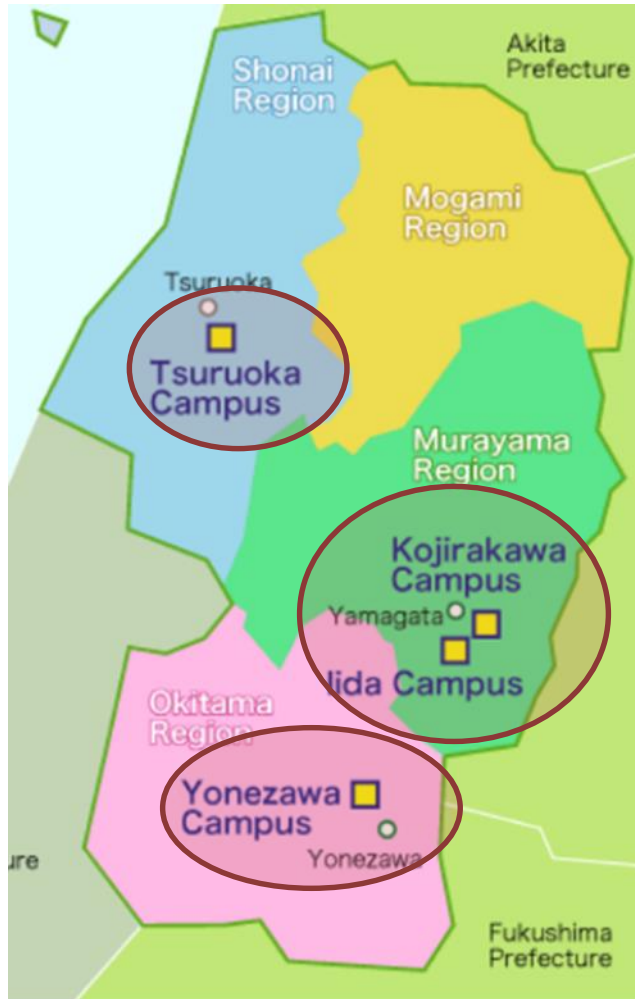


# Where is Yamagata, Japan?



- Direct Distance from Tokyo: 190 miles
  - 3 hours by bullet train
  - 45 minutes by airplane

# Yamagata University (YU)



## ■ Type: National University

- Year Founded: 1878
- Multi-Campus (4 campuses)
  1. Kojirakawa Campus (K)
  2. Iida Campus (I)
  3. Yonezawa Campus (Y)
  4. Tsuruoka Campus (T)

## ■ Six Colleges:

- Agriculture (T)
- Education, Arts and Science (K)
- Engineering (Y)
- Literature and Social Science (K)
- Medicine (I)
- Sciences (K)

- Kojirakawa Campus – Tsuruoka Campus: 60 miles
- Kojirakawa Campus – Yonezawa Campus: 30 miles

# Yamagata University (YU)

---

## ■ Degree Programs

- Undergraduate: **22**
  - Master: **19**
  - Doctorate: **10**
- Same Tuition  
\$4,800/year**

## ■ 2017-2018 FT Enrollment & FT Faculty/Staff

- Degree-seeking UG: **7,546**
  - **Male: 62%**
- Degree-seeking, first-time freshmen: **1,731**
  - **In-state: 23%**
- Degree-seeking Grad: **1,394**
  - **Male: 75%**
- Faculty & Staff: **800+** & **300+**, respectively

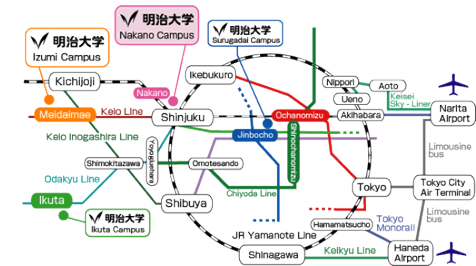
**Meiji University**

**■ In the center of Metropolitan Tokyo**

## Location of Campuses ... 10minutes to Tokyo station!

Meiji University is right in the middle of Tokyo, the political, economic, academic, and cultural center of Japan. Over 35 million people – over a quarter of all Japanese – live in Tokyo and the area around Tokyo.

Meiji University's official mascot character Mejiro is an owl that looks like a sage of the forest. Theory has it that Mejiro was born in the forests of Yamagata, which are the home prefectures of Meiji's founders.



## Overview

■ **Established : 1881** (established as Meiji Law School )

■ **Type: Private University**

- multi-campus ( 4 campuses in Tokyo、Bangkok)

■ **Students:** Approximately **30,000**

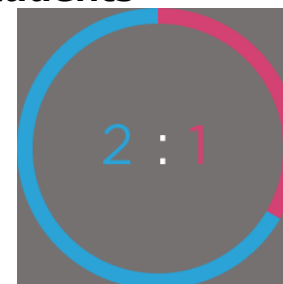
- 28,000 undergraduates  
\* 7,000 new incoming/year
- 2,000 graduates

■ **Full-time Faculty:** Approximately **1,000**

■ **THE Asia Univ. Ranking : 251-300**

**THE World Univ. Ranking: 801-**

Students



■ Male  
■ Female



■ Tokyo area  
■ Regional prefectures

# Japan's Most Popular University

The highest in Japanese Univ.



Meiji was chosen as **the most popular university** among students (as assessed by high school career counselors) among all 780 universities in Japan, according to "Looking for a University" Ranking Book 2016, produced by Daigaku Tsushin.

## Applications in 2016

1	Kindai Univ.	119,915
2	<b>MEIJI Univ.</b>	<b>108,500</b>
3	Waseda Univ.	108,039
4	Ninon Univ.	104,558
5	Hosei Univ.	101,976
6	Ritsumeikan Univ.	94,930
7	Toyo Univ.	84,886



# Colleges and Schools

- 1 ■ Law
- 2 ■ Commerce
- 3 ■ Political Science and Economics
- 4 ■ Arts and Letters
- 5 ■ Science and Technology
- 6 ■ Agriculture
- 7 ■ Business Administration
- 8 ■ Information and Communication
- 9 ■ Interdisciplinary Mathematical Sciences
- 10 ■ Global Japanese Studies



Florida State University International Exchange Program as part of the Walt Disney World International College Program

## Graduate School: List of Fields

- Law
- Commerce
- Political Science and Economics
- Arts and Letters
- Science and Technology
- Agriculture
- Business Administration
- Information and Communication
- Global Japanese Studies
- Humanities
- Advanced Mathematical Sciences
- Global Governance

- Law school
- Governance Studies
- Global Business
- Professional Accountancy



Meiji University International Institute for Bio-Resource Research : manipulating fertilized eggs in pig cloning

# 500,000 Graduates in the World

## Two Japanese Prime Ministers

Two prime ministers of Japan were graduates of Meiji University: Takeo Miki (66th prime minister) and Tomiichi Murayama (81st prime minister).

**Meiji placed 4th among all 780 universities of Japan in terms of company presidents who were alumni, according to [Japan] University Ranking 2016, Asahi Shimbun Publications.**

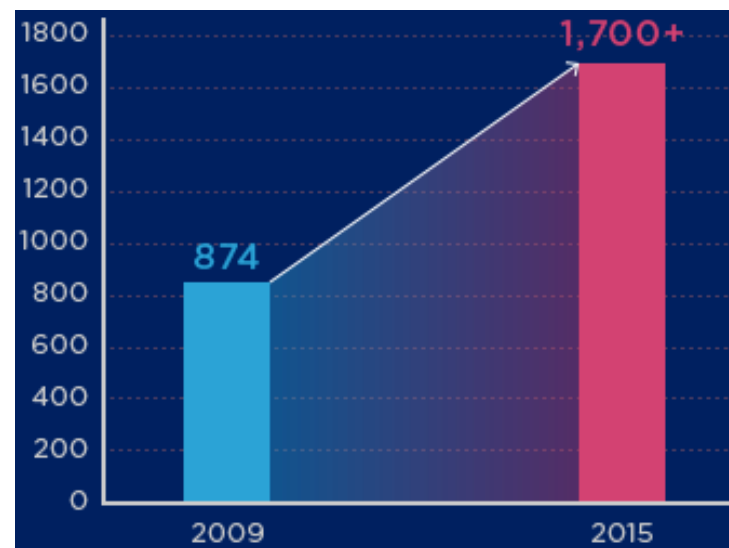
## Olympic Athletes 264, Medal Won 36

Among currently active athletes, there are 11 Meiji alumni in professional baseball, about 50 in Japan's soccer J League, 13 in the X-League of American football, 43 in Japan's Top League for rugby union and four (male) in the National Basketball League of Japan.



# Partner Institutions of Meiji Univ.

**270** Collaborating universities in **47** countries (As of Spring 2016)



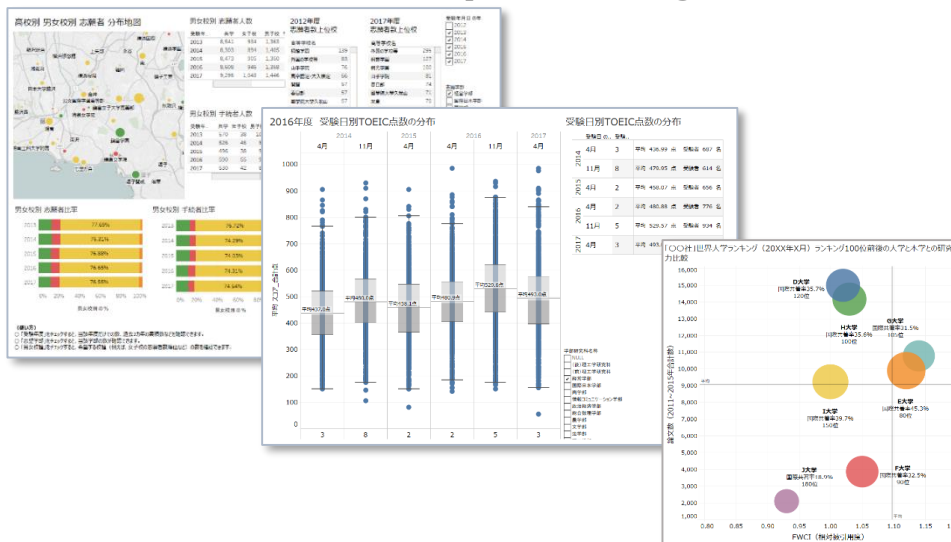
Changes in annual number of admitted international students

It placed **6**th among all 780 universities of Japan in terms of number of overseas students, according to [Japan] University Ranking 2016, Asahi Shimbun Publications.

# Office of Institutional Research & Assessment

## Data analysis Hot Topics

- *Applicant for enrollment*
- *Gender*
- *Program review, Learning outcomes*
- *World University Ranking...*



## STAFF

- Vice-president
- Assistant president
- Director
- Assistant Director (Analyst)
- Analyst
- **\* IT (System Engineer)**





# Making Campus Decisions Better

**Academic Strategy and Planning Division**  
**Office of Institutional Research & Assessment**  
Koichi YAMAMOTO  
[ma94004@mics.meiji.ac.jp](mailto:ma94004@mics.meiji.ac.jp)

