



A Study of Data Governance and Institutional Research in the U.S. Universities

**Koji Fujiwara
Shigeru Asano
Koichi Yamamoto
(Meiji University)**

November 27-29, 2017

Outline of This Presentation

1. Research Background
2. About Yamagata University
3. About Meiji University

Research Background



Key Characteristics of Higher Education in Japan

- Enrollment caps are set by MEXT*.
 - Budget
 - Tuition
 - # of Fac/Staff

- Students **must decide on their major** when they apply for admission.
 - **Can't change the major after enrollment**
 - No double majors
 - No pre- program (e.g., Pre-Med, Pre-Vet, etc.)
 - Almost impossible to transfer to another school

* Ministry of Education, Culture, Sports, Science and Technology

Hot Topics in Japanese Higher Education

(in alphabetical order)

- **Assessment**
- **Curriculum Mapping**
- **Institutional Effectiveness (IE)**
- **Institutional Research (IR)**
- **Internal Quality Assurance**
- **Internationalization**
- **Key Performance Indicator (KPI)**
- **Program Review**
- **World University Rankings**

Problems Related to IR in Japan

1. No campus-wide integrated database
2. Too strict university's data access policies
 - a. Many Japanese IR offices are struggling with collecting the data from other offices within the same university.
3. No FERPA/HIPAA
 - a. The U.S. IR offices may be able to collect the data if there exists "legitimate educational interest."

What do we want to accomplish?

■ We would like to learn about the followings:

1. Data Governance at your university
2. FERPA/HIPPA and Data Access Policies
3. Campus-wide Integrated Database
4. Performance Metrics/Program Indicators
5. Program Review

Acknowledgment

This study is supported by JSPS Grants-in-Aid for Scientific Research (KAKENHI) 17K04603 to Dr. Fujiwara.

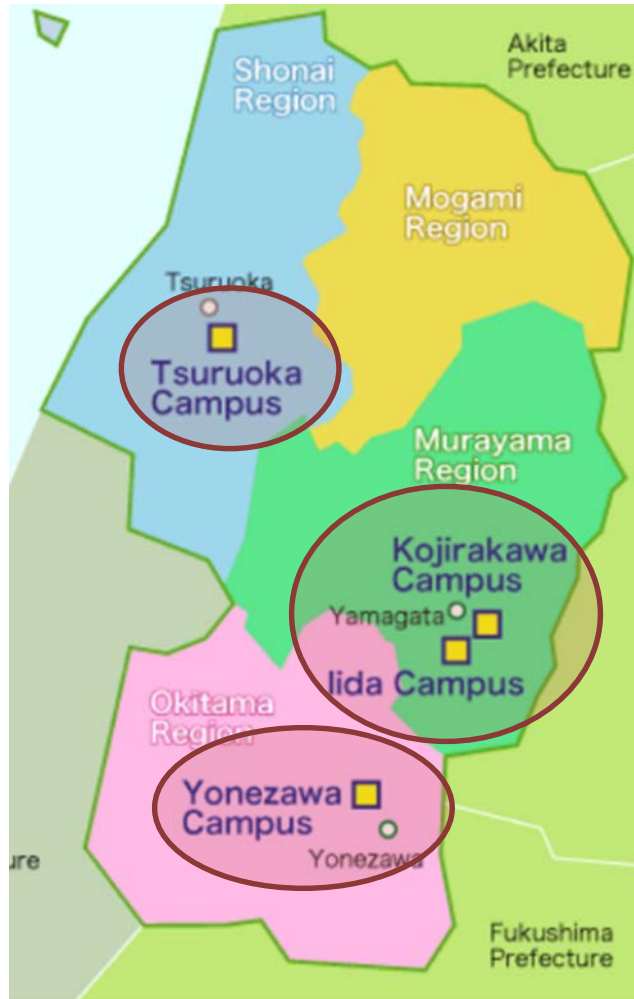
Yamagata University



Where is Yamagata Prefecture?



Yamagata University (YU)



■ **Type:** National University

- multi-campus (4 campuses)

■ **Students:** 8,800

- 7,500 undergraduates (1,700 new incoming/year)
- 1,300 graduates

■ **Full-time Faculty:** 900

■ **Six Colleges:**

- Agriculture
- Literature and Social Science
- Education, Arts and Science
- Sciences
- Medicine
- Engineering

- Yamagata City – Tsuruoka City: 60 miles
- Yamagata City – Yonezawa City: 30 miles

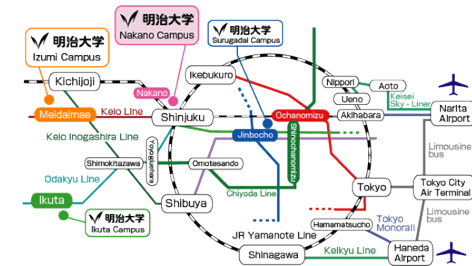
Meiji University

■ In the center of Metropolitan Tokyo

Location of Campuses ... 10minutes to Tokyo station!

Meiji University is right in the middle of Tokyo, the political, economic, academic, and cultural center of Japan. Over 35 million people – over a quarter of all Japanese – live in Tokyo and the area around Tokyo.

Meiji University's official mascot character Mejiro is an owl that looks like a sage of the forest. Theory has it that Mejiro was born in the forests of Yamagata, which are the home prefectures of Meiji's founders.



Overview

■ **Established : 1881** (established as Meiji Law School)

■ **Type: Private University**

- multi-campus (4 campuses in Tokyo、Bangkok)

■ **Students:** Approximately **30,000**

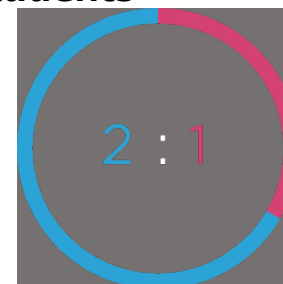
- 28,000 undergraduates
* 7,000 new incoming/year
- 2,000 graduates

■ **Full-time Faculty:** Approximately **1,000**

■ **THE Asia Univ. Ranking : 251-300**

THE World Univ. Ranking: 801-

Students



■ Male
■ Female



■ Tokyo area
■ Regional prefectures

Japan's Most Popular University

The highest in Japanese Univ.



Meiji was chosen as **the most popular university** among students (as assessed by high school career counselors) among all 780 universities in Japan, according to "Looking for a University" Ranking Book 2016, produced by Daigaku Tsushin.

Applications in 2016

1	Kindai Univ.	119,915
2	MEIJI Univ.	108,500
3	Waseda Univ.	108,039
4	Ninon Univ.	104,558
5	Hosei Univ.	101,976
6	Ritsumeikan Univ.	94,930
7	Toyo Univ.	84,886

Colleges and Schools

- 1 ■ Law
- 2 ■ Commerce
- 3 ■ Political Science and Economics
- 4 ■ Arts and Letters
- 5 ■ Science and Technology
- 6 ■ Agriculture
- 7 ■ Business Administration
- 8 ■ Information and Communication
- 9 ■ Interdisciplinary Mathematical Sciences
- 10 ■ Global Japanese Studies



Florida State University International Exchange Program as part of the Walt Disney World International College Program

Graduate School: List of Fields

- Law
- Commerce
- Political Science and Economics
- Arts and Letters
- Science and Technology
- Agriculture
- Business Administration
- Information and Communication
- Global Japanese Studies
- Humanities
- Advanced Mathematical Sciences
- Global Governance

- Law school
- Governance Studies
- Global Business
- Professional Accountancy



Meiji University International Institute for Bio-Resource Research : manipulating fertilized eggs in pig cloning

500,000 Graduates in the World

Two Japanese Prime Ministers

Two prime ministers of Japan were graduates of Meiji University: Takeo Miki (66th prime minister) and Tomiichi Murayama (81st prime minister).

Meiji placed 4th among all 780 universities of Japan in terms of company presidents who were alumni, according to [Japan] University Ranking 2016, Asahi Shimbun Publications.

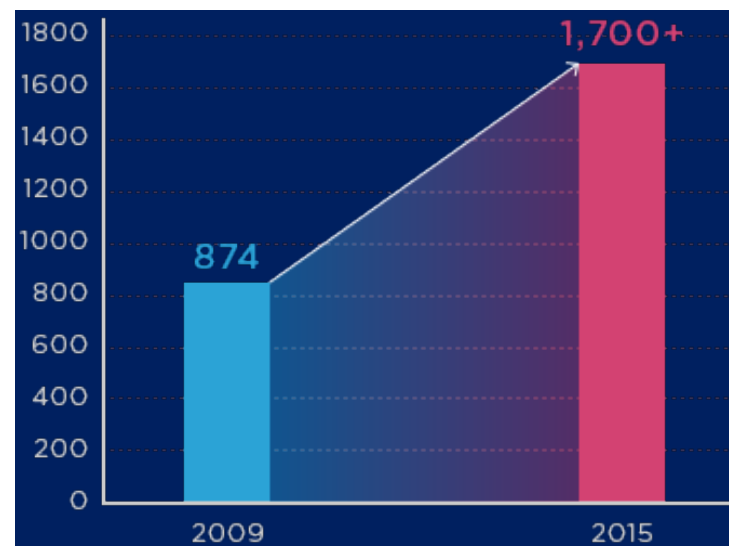
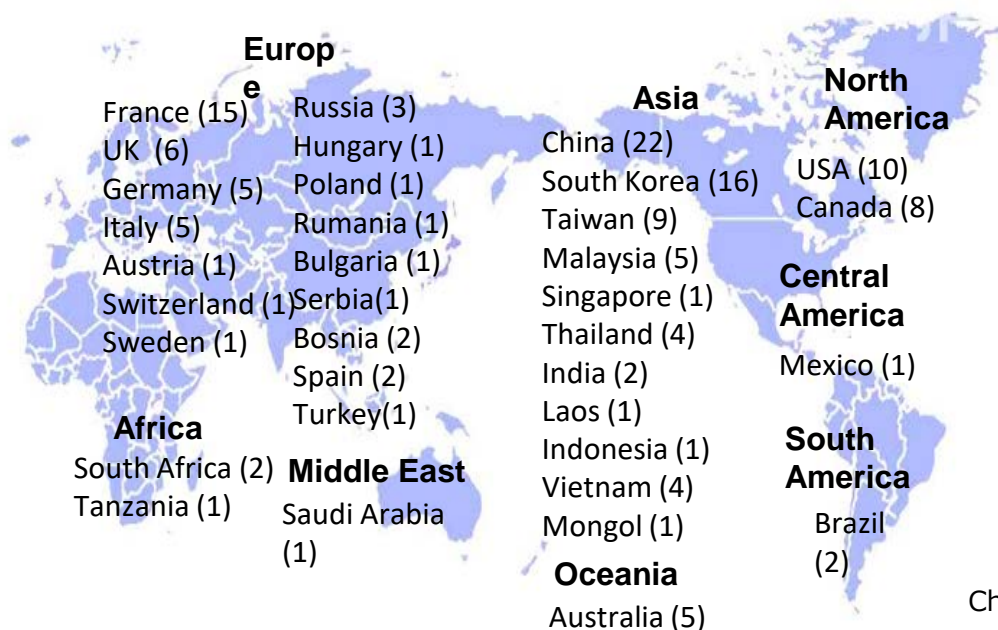
Olympic Athletes 264, Medal Won 36

Among currently active athletes, there are 11 Meiji alumni in professional baseball, about 50 in Japan's soccer J League, 13 in the X-League of American football, 43 in Japan's Top League for rugby union and four (male) in the National Basketball League of Japan.



Partner Institutions of Meiji Univ.

270 Collaborating universities in **47** countries (As of Spring 2016)



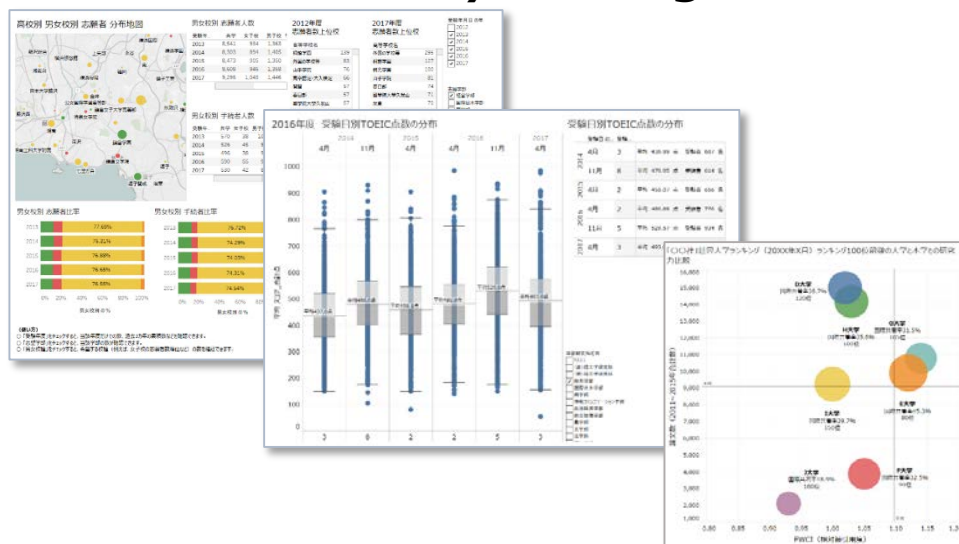
Changes in annual number of admitted international students

It placed **6**th among all 780 universities of Japan in terms of number of overseas students, according to [Japan] University Ranking 2016, Asahi Shimbun Publications.

Office of Institutional Research & Assessment

Data analysis Hot Topics

- *Applicant for enrollment*
- *Gender*
- *Program review, Learning outcomes*
- *World University Ranking...*



STAFF

- Vice-president
- Assistant president
- Director
- Assistant Director (Analyst)
- Analyst
- *** IT (System Engineer)**



Making Campus Decisions Better

Academic Strategy and Planning Division
Office of Institutional Research & Assessment
Koichi YAMAMOTO
ma94004@mics.meiji.ac.jp

